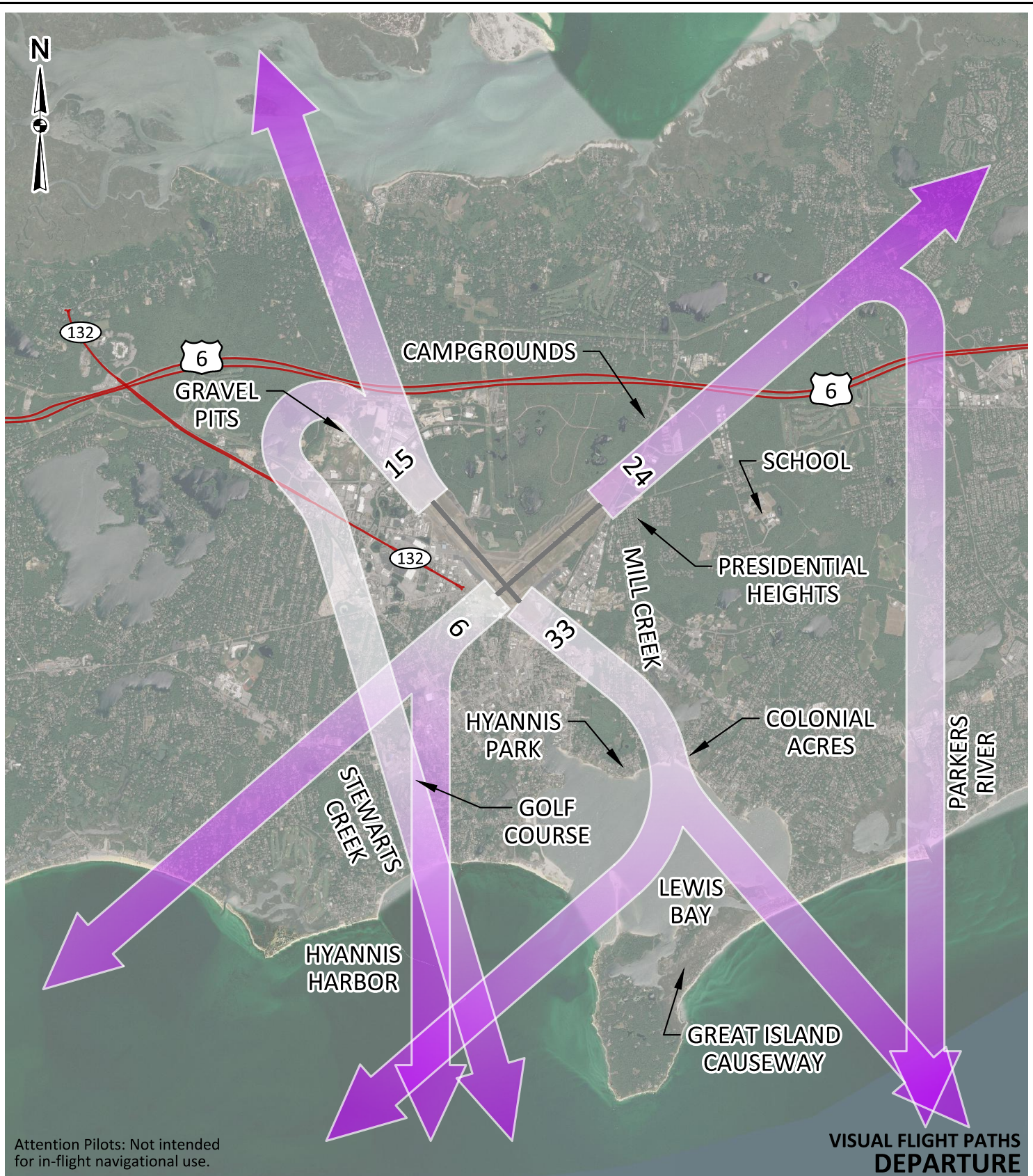


- **Fly Friendly**
 - Cape Cod Gateway Airport is very conscious of its location in highly residential setting. It works cooperatively with the airlines and aircraft pilots to reduce aircraft noise and maintain a constructive dialogue with our community.
 - The airport has instituted noise abatement procedures and defined flight corridors. Our visual flight rules for aircraft are voluntary by law; pilots and aircraft operators are strongly urged to follow them when safety permits.
 - Comments, questions and other information related to airport noise are welcome via a designated phone number, 508 862-8268.
- **Fly Quiet**
 - Cape Cod Gateway Airport has established voluntary quiet hours between 10 p.m. and 6 a.m. During these times, airlines and general aviation operators are encouraged to limit their flights so that citizens in neighboring communities are not disturbed. Training, touch- and-go and certification flights during these hours are prohibited without approval of the airport management.
 - While the quiet hours are voluntary, operations that do occur during this time are carefully monitored and recorded.
 - The FAA does not allow the airport to mandate these quiet hours or allow the airport to violate anyone not complying.



Attention Pilots: Not intended for in-flight navigational use.

**VISUAL FLIGHT PATHS
DEPARTURE**



- **Fly Friendly**
 - Cape Cod Gateway Airport is very conscious of its location in highly residential setting. It works cooperatively with the airlines and aircraft pilots to reduce aircraft noise and maintain a constructive dialogue with our community.
 - The airport has instituted noise abatement procedures and defined flight corridors. Our visual flight rules for aircraft are voluntary by law; pilots and aircraft operators are strongly urged to follow them when safety permits.
 - Comments, questions and other information related to airport noise are welcome via a designated phone number, 508 862-8268.
- **Fly Quiet**
 - Cape Cod Gateway Airport has established voluntary quiet hours between 10 p.m. and 6 a.m. During these times, airlines and general aviation operators are encouraged to limit their flights so that citizens in neighboring communities are not disturbed. Training, touch- and-go and certification flights during these hours are prohibited without approval of the airport management.
 - While the quiet hours are voluntary, operations that do occur during this time are carefully monitored and recorded.
 - The FAA does not allow the airport to mandate these quiet hours or allow the airport to violate anyone not complying.